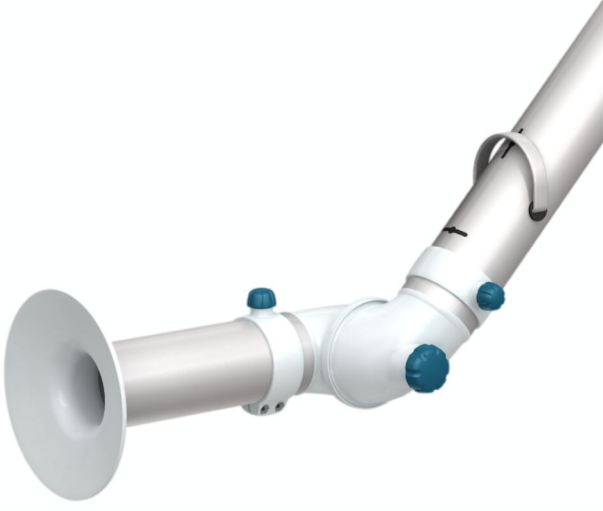


## Tezgâh Üstü Ekstraksiyon Kolu FX2 50 Orijinal

Küçük, esnek ve kullanımı kolay kolların gerekli olduğu uygulamalarda havada dolaşan tehlikeli kirletici maddelerin ekstraksiyonunun en ideal ve en tasarruflu çözümüdür.














Nederman FX2 kolları iki veya üç adet ayarlanabilir kompozit sürtünme birleşimine sahip hafif ağırlıkta eloksallı alüminyum kesitlerden imal edilmiştir. Kolay kullanımla birlikte sağlamlık ve dayanıklılık sunan bu ürünler birçok tipte ortamda kullanılabilirler. Özellikle küçük, esnek ve kullanımı kolay kolların gerekli olduğu uygulamalar için uygundur. Az elektriksel deşarj riski olan veya agresif kimyasallarca saldırı riski olan genel uygulamalar için sağlam ve güvenilir çok yönlü bir koldur.

- İdeal etkinlik ve düşük gürültü seviyesi güvenli ve sessiz çalışma ortamı sağlar.
- Tavanlara, duvarlara ve zeminlere veya tezgah üstüne montajlarına sabitlenmeleri ve uygun kesim uzatma profili maksimum montaj esnekliği sunar.
- En dıştaki iki kol birleşimi döner tertibatı 360° dönebilir ki bu da eşsiz manevra kabiliyetini sağlar.
- Sade, pürüzsüz ve estetik bir tasarım kolların dayanıklılıklarından ve güvenilirliklerinden herhangi bir ödün vermeksizin her türlü ortamda en iyi şekilde uyum sağlamasına olanak tanır.
- Müşteriler için zaman ve maliyet tasarrufu sağlayan ve daha iyi bir performans sunmak için güvenilirlik ve işlevsellik sunan son derece entegre ürünler

Medya	Tezgâh Üstü Ekstraksiyon Kolu FX2 50 Orijinal
Ses Düzeyi(dB(A))	110 m <sup>3</sup> /saatte 60 dB(A)
Kurulum	[Indoor]
Materyal	Eloksallı alüminyum borular. İletken PP plastiklerde birleşimler. İletken EPDM lastik boru bağlantısı. PP plastikte mini hazne.
Dumam ısısı	max 70°C
Emiş kolu ölçüsü (mm)	50
Hava Debisi (m <sup>3</sup> /h)	50-110
Renk	Aluminum and white



## Tezgâh Üstü Ekstraksiyon Kolu FX2 50 Orijinal

[image]	Bilgi Dökümanı ismi	Kol uzunluğu (m)	Ağırlık (kg)	[model]
	Frekans inverteri 2,2 kW, transmitter 0 - 2 kPa dahil	0,7	1,7	70600144*
	FX2-ORIG-D50-L700-Yukarı-ARTI	0	2,7	70600244**
	FX2-ORIG-D50-L700-Yukarı/Aşağı- Boyunca	0,7	1,2	70600344*
	FX2-ORIG-D50-L1100-Yukarı-Alt	1,1	2,3	70600444***
	FX2-ORIG-D50-L1100-Yukarı-ARTI	0	3,3	70600544**
	FX2-ORIG-D50-L1100-Aşağı-Alt	1,1	2,3	70600644****
	FX2-ORIG-D50-L1100-Aşağı- Boyunca	1,1	1,8	70600744*****
	FX2-ORIG-D50-L1500-Yukarı-Alt	1,5	2,6	70600844***
	FX2-ORIG-D50-L1500-Up-PLUS	1,5	3,6	70600944**
	FX2-ORIG-D50-L1500-Aşağı-Alt	1,5	2,6	70601044****
	FX2-ORIG-D50-L1500-Aşağı- Boyunca	1,5	2,1	70601144*****

\*Up/Down-Low

\*\*Up-PLUS

\*\*\*Up-Low

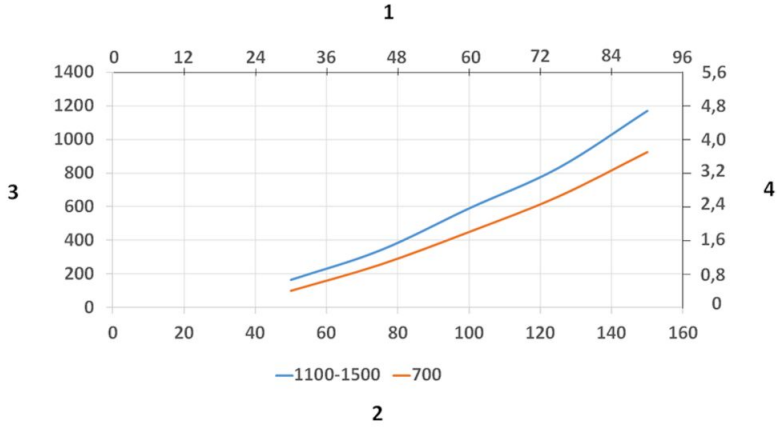
\*\*\*\*Down-Low

\*\*\*\*\*Down-Through

## Tezgâh Üstü Ekstraksiyon Kolu FX2 50 Orijinal

	[accessory]	[partno]
	FX-braket kiti-D50/75/100-L190	70501144
	FX2-braket kiti-D50/75/100-L500	70377042
	FX2-duvar BRKT kit-düz-L190-Beyaz	70377043
	FX2-duvar-P BRKT kit-D50/75/100-L190	70377046
	FX2-tezgah braket kiti-D50/75/100	70501444
	FX-klasik braket-D50/75/100	70501244
	FX-uygun Kesim uzantı-L1100.	70501344
	FX-Uygun Kesim uzantı-L2200	70374600
	FX-Tavan kapatma plakası.	70502644
	FX2-Tavan kapatma plakası-PLUS	70377045
	FX-Kombi gövde-ORİJİNAL-D50/75/100	70500144
	FX-Kubbe gövde-ORİJİNAL-D50/75/100	70376982
	FX-metal gövde-ORIG/CHEM-D50/75/100	70500444
	FX-Flanş gövde-ORİJİNAL-D50/75/100	70502844
	FX2-Kanal konnektörü-ORIG/CHEM-D50	70377036
	FX2-AI Kanal-L1000-D50toD77	70377056
	FX2-AI Kanal-L2000-D50toD77	70377057
	FX-Hortum-D75-L3000-gri	70377098
	FX2-Hose support ring-D75	70377067

## Tezgâh Üstü Ekstraksiyon Kolu FX2 50 Orijinal



Pressure Drop diagram:

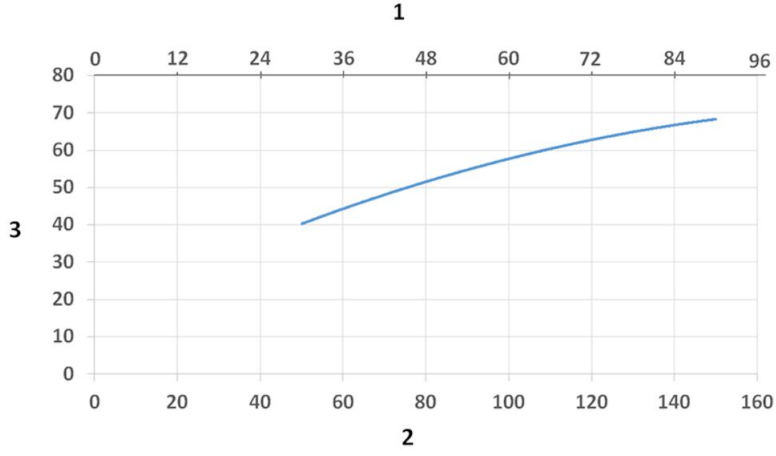
1) X- Axis: Air Flow Rate (cfm)

2) X- Axis: Air Flow Rate (m/h)

3) Y- Axis: Static Pressure Drop (Pa)

4) Y- Axis: Static Pressure Drop (in. wg.)

## Tezgâh Üstü Ekstraksiyon Kolu FX2 50 Orijinal



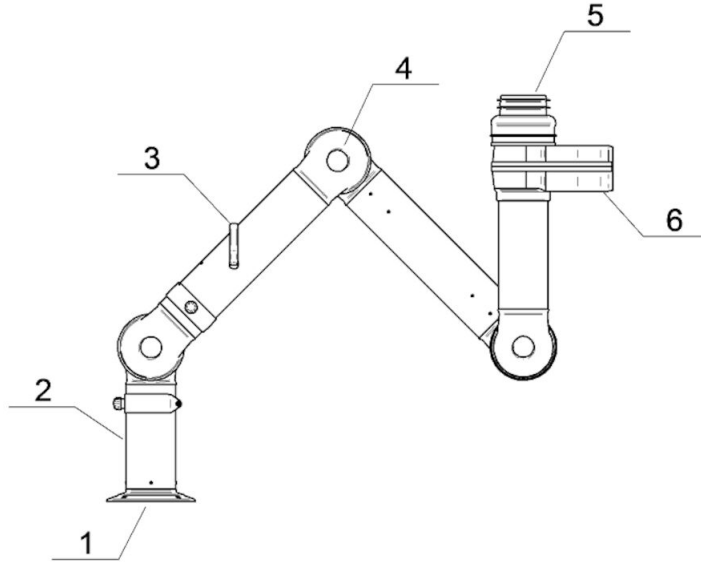
Sound Level diagram:

1) X- Axis: Air Flow Rate (cfm)

2) X- Axis: Air Flow Rate (m/h)

3) Y- Axis: Sound Pressure Level (dB) (A)

## Tezgâh Üstü Ekstraksiyon Kolu FX2 50 Orijinal



### Material:

1) Flange: PP

2) Tubes: Aluminum, anodized 10 µm

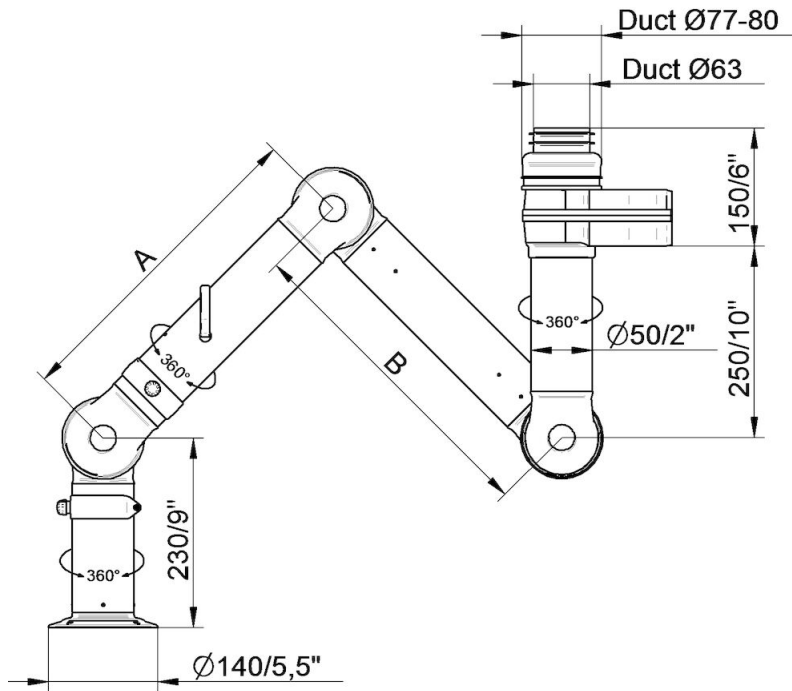
3) Damper adjustment handle: Aluminum, anodized 10 µm  
Internal spring: Stainless steel  
Damper blade: Conductive TP & PP plastic

4) Joints: PP with glass fibre reinforcement  
Plastic rings: PP with glass fibre reinforcement  
Axial locking rings: PP with glass fibre reinforcement  
Adjustment knobs: PA & EDS plastic  
Threaded shaft inside joints: Stainless Steel

5) Duct connector: EPDM Rubber

6) Swivel: Aluminum, powder coating  
Rivets: Aluminum  
Bearings swivel: PP plastic with glass fibre reinforcement

## Tezgâh Üstü Ekstraksiyon Kolu FX2 50 Orijinal

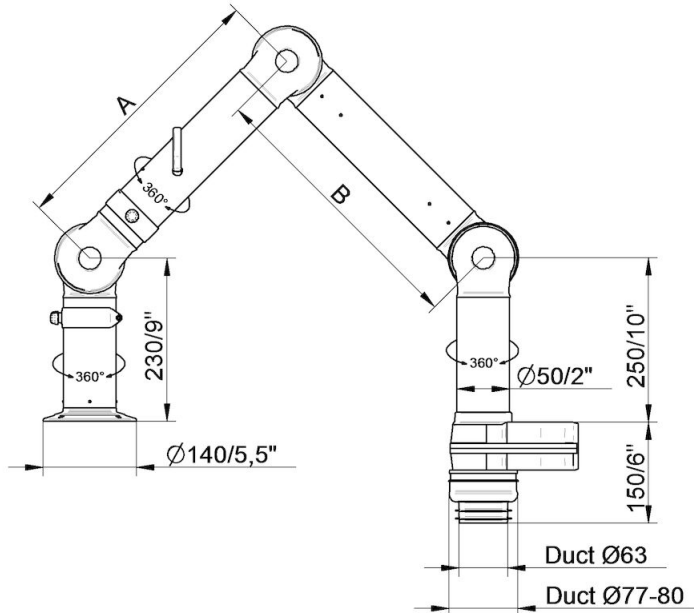


- FX2-ORIG-D50-L700-Up/Down-Low  
Part number: 70600144  
Max. working radius: 630 mm (24,8 in)  
A: 400 mm (15,7 in)

- FX2-ORIG-D50-L1100-Up-Low  
Part number: 70600444  
Max. working radius: 1030 mm (40,5 in)  
A: 400 mm (15,7 in)  
B: 400 mm (15,7 in)

- FX2-ORIG-D50-L1500-Up-Low  
Part number: 70600844  
Max. working radius: 1430 mm (56,3 in)  
A: 500 mm (19,7 in)  
B: 700 mm (27,6 in)

## Tezgâh Üstü Ekstraksiyon Kolu FX2 50 Orijinal



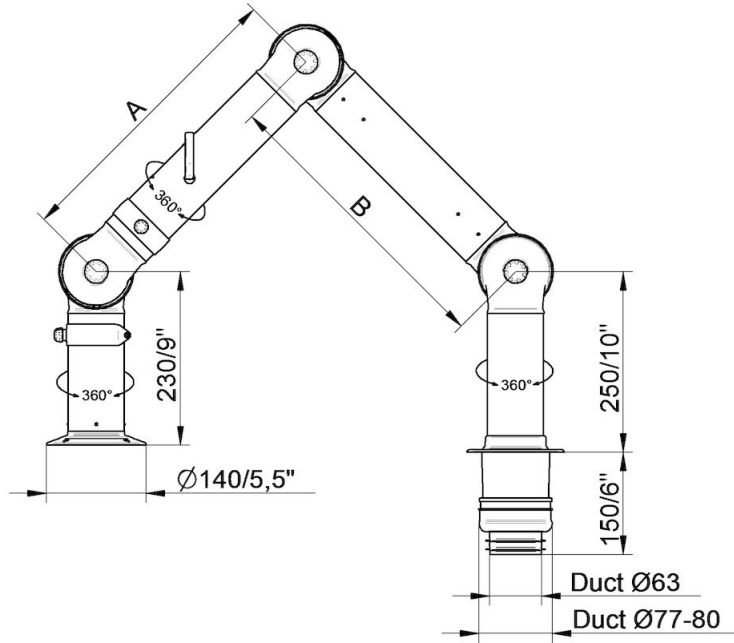
- FX2-ORIG-D50-L700-Up/Down-Low  
Part number: 70600144  
Max. working radius: 630 mm (24,8 in)  
A: 400 mm (15,7 in)

- FX2-ORIG-D50-L1100-Down-Low  
Part number: 70600644  
Max. working radius: 1030 mm (40,5 in)  
A: 400 mm (15,7 in)  
B: 400 mm (15,7 in)

- FX2-ORIG-D50-L1500-Down-Low  
Part number: 70601044  
Max. working radius: 1430 mm (56,3 in)  
A: 500 mm (19,7 in)  
B: 700 mm (27,6 in)



## Tezgâh Üstü Ekstraksiyon Kolu FX2 50 Orijinal

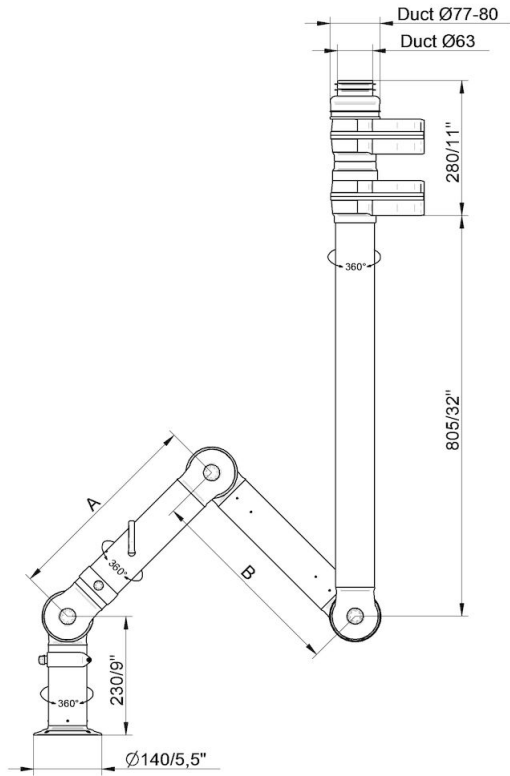


Part number: 70600344  
Max. working radius: 630 mm (24,8 in)  
A: 400 mm (15,7 in)

• FX2-ORIG-D50-L1100-Down-Through  
Part number: 70600744  
Max. working radius: 1030 mm (40,5 in)  
A: 400 mm (15,7 in)  
B: 400 mm (15,7 in)

• FX2-ORIG-D50-L1500-Down-Through  
Part number: 70601144  
Max. working radius: 1430 mm (56,3 in)  
A: 500 mm (19,7 in)  
B: 700 mm (27,5 in)

## Tezgâh Üstü Ekstraksiyon Kolu FX2 50 Orijinal

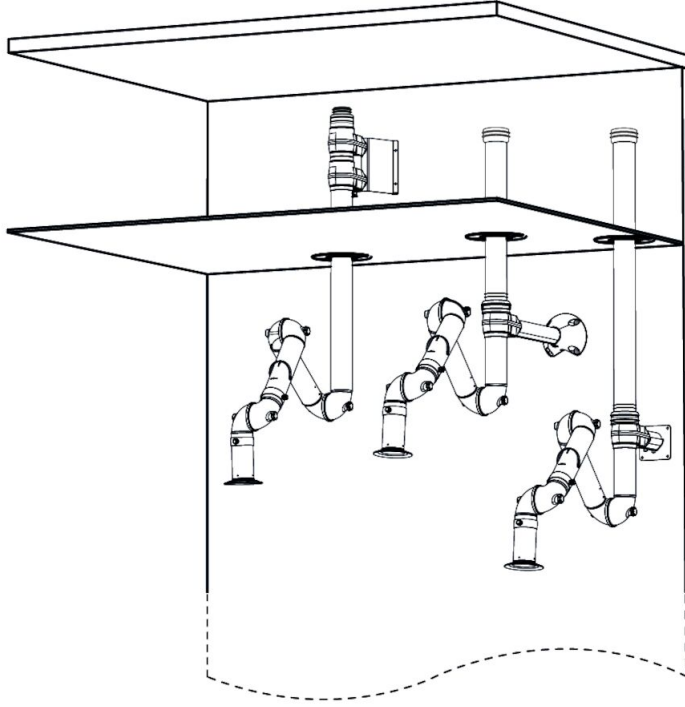


- FX2-ORIG-D50-L700-Up-PLUS  
Part number: 70600244  
Max. working radius: 630 mm (24,8 inch)  
A: 400 mm (15,7 in)

- FX2-ORIG-D50-L1100-Up-PLUS  
Part number: 70600544  
Max. working radius: 1030 mm (40,5 in)  
A: 400 mm (15,75 in)  
B: 400 mm (15,7 in)

- FX2-ORIG-D50-L1500-Up-PLUS  
Part number: 70600944  
Max. working radius: 1430 mm (56,3 in)  
A: 500 mm (19,7 in)  
B: 700 mm (27,6 in)

## Tezgâh Üstü Ekstraksiyon Kolu FX2 50 Orijinal



Wall mounting examples:

Left: FX2-Up-PLUS arm with following accessories:

- FX2-Wall-P BRKT kit-D50/75/100-L190
- FX2-Ceiling cover plate-PLUS

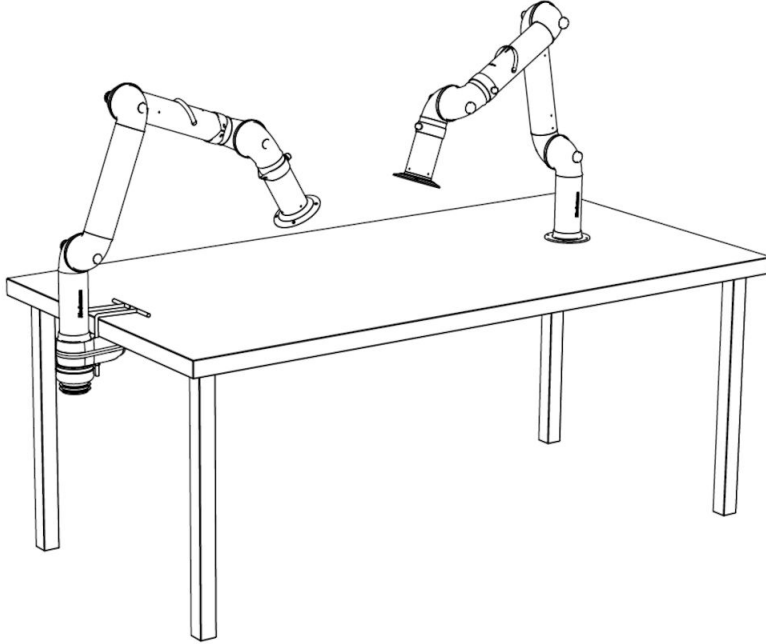
Middle: FX2-Up-Low arm with following accessories:

- FX2-Bracket kit-D50/75/100-L500
- FX2-Ceiling cover plate-PLUS
- FX2-Alu duct
- FX2-Duct connector-ORIG/CHEM-D75

Right: Up-Low arm with following accessories:

- FX2-Wall BRKT kit-Flat-L190-White
- FX2-Ceiling cover plate-PLUS
- FX2-Alu duct
- FX2-Duct connector-ORIG/CHEM-D75

## Tezgâh Üstü Ekstraksiyon Kolu FX2 50 Orijinal



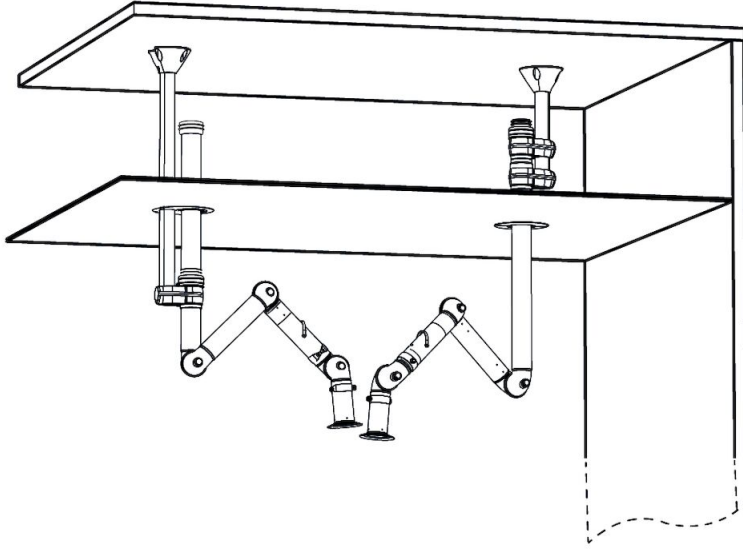
Bench mounting examples:

Left: FX2-Down-Low arm with following accessories:

-FX2-Bench bracket kit-D50/75/100

Right: FX2-Down-Through arm

## Tezgâh Üstü Ekstraksiyon Kolu FX2 50 Orijinal



Ceiling mounting example:

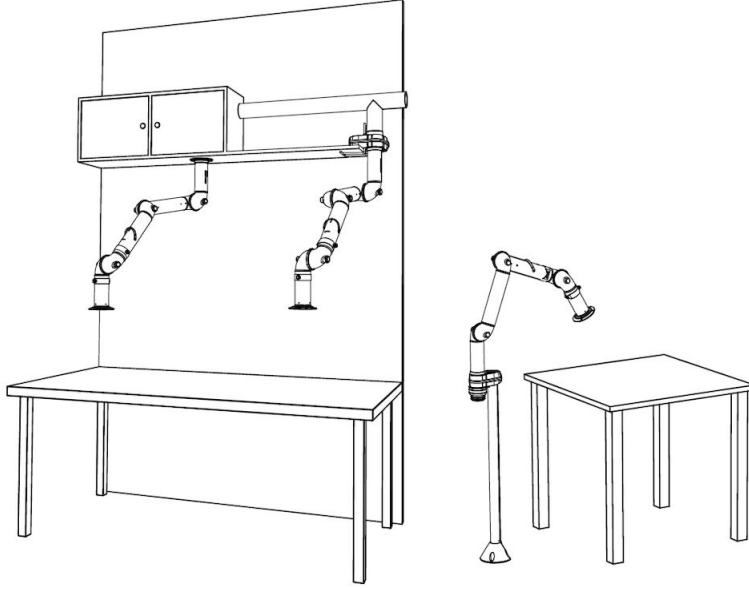
Left: FX2-Up-Low arm with following accessories:

- FX-Classic bracket
- FX-Cut2fit extension-L1100
- FX2-Alu duct
- FX2-Duct connector-ORIG/CHEM-D75
- FX-Ceiling cover plate

Right: FX2-Up-PLUS arm with following accessories:

- FX2-Bracket kit-D50/75/100-L500
- FX2-Ceiling cover plate-PLUS

## Tezgâh Üstü Ekstraksiyon Kolu FX2 50 Orijinal



Other mounting examples:

Left: Over bench cabinet mounting with FX2-Up/Down-Through arm

Middle: Shelf mounting with FX2-Up-Low arm and following accessories:

-FX2-Bench bracket kit

Right: Floor mounting with FX2-Up-Low arm and following accessories:

-FX-Classic bracket

-FX-Cut2fit extension-L1100